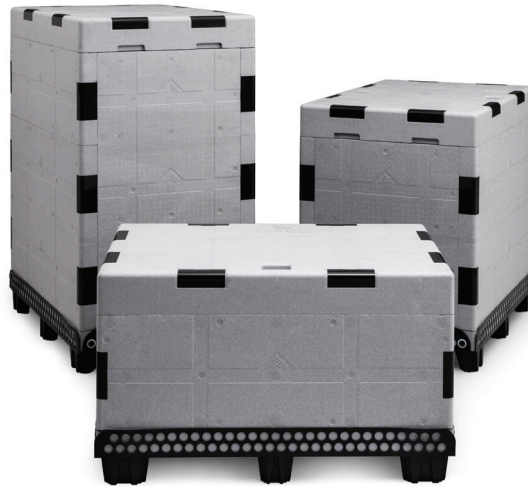




Smaller volume PCM bulk shipper solves Insulin delivery challenge to Africa



Transporting Insulin from Denmark to Democratic Republic of Congo

A client was requesting delivery of Insulin to their warehouse in Goma, DRC. Due to airport size and services to Goma, it was decided that the shipment would go to Kigali, Rwanda by air and trucked to Goma.

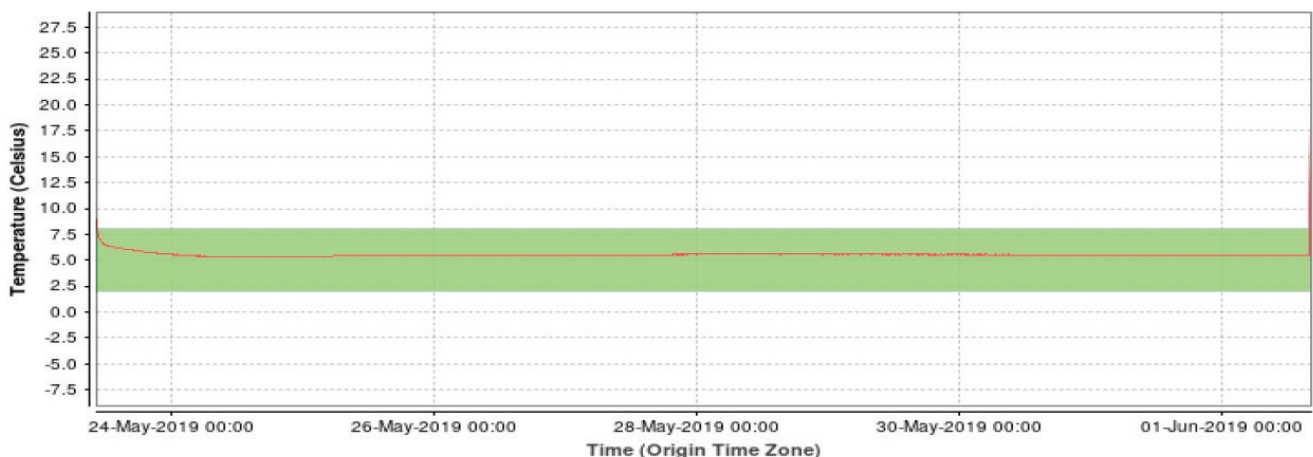
This required a packaging solution that would keep the products at temperature range between 2-8 degrees Celsius throughout the transit time without any excursions. The decision was made to use CoolPall™ Flex from Peli BioThermal, as the ability to hibernate would provide sufficient security of temperature as the transit time was 7 days.

The routing planned was:

- Trucking from warehouse in Lyngbe, Denmark to Copenhagen airport, Denmark
- Airfreight from Copenhagen airport, Denmark to Amsterdam airport, Netherlands
- Stored at keep cool facility until flight departure
- Airfreight from Amsterdam airport, Netherlands to Kigali airport, Rwanda
- Stored at keep cool facility until truck pickup
- Trucking in temperature controlled vehicle from Kigali airport, Rwanda to Goma warehouse, DRC

After arrival the temperature monitor data was returned to Missionpharma for review of the cold chain. The CoolPall™ Flex products lived up to the clients expectations without any excursions of the temperature throughout the transport. The client was very satisfied with the performance of CoolPall™ Flex and continue to use them on more sensitive multimodal transports.

Product Performance - Denmark to DR Congo





About Missionpharma

Established in 1975, Missionpharma is a leading supplier of generic pharmaceuticals, medical consumables and hospital equipment to public institutions in developing countries worldwide. Our clients include, among others, ministries of health, international funders and NGOs. We provide safe and affordable products and solutions, which are built on a deep insight and decades of experience.

Our headquarters are located in Lyngø, North of Copenhagen, and we have subsidiaries and regional offices in India, China and Africa as well as local representatives in more than 30 countries worldwide. Missionpharma is a part of the French company, Eurapharma, owned by the CFAO Group.

Our logistics services constitute an integrated part of the products we deliver. As a result, we have established a global logistics organisation with a team of specialists, who cooperate closely with the appointed international freight forwarders to develop the best possible solutions to match customer needs and ensure that shipments are always handled in a professional and cost-effective manner.

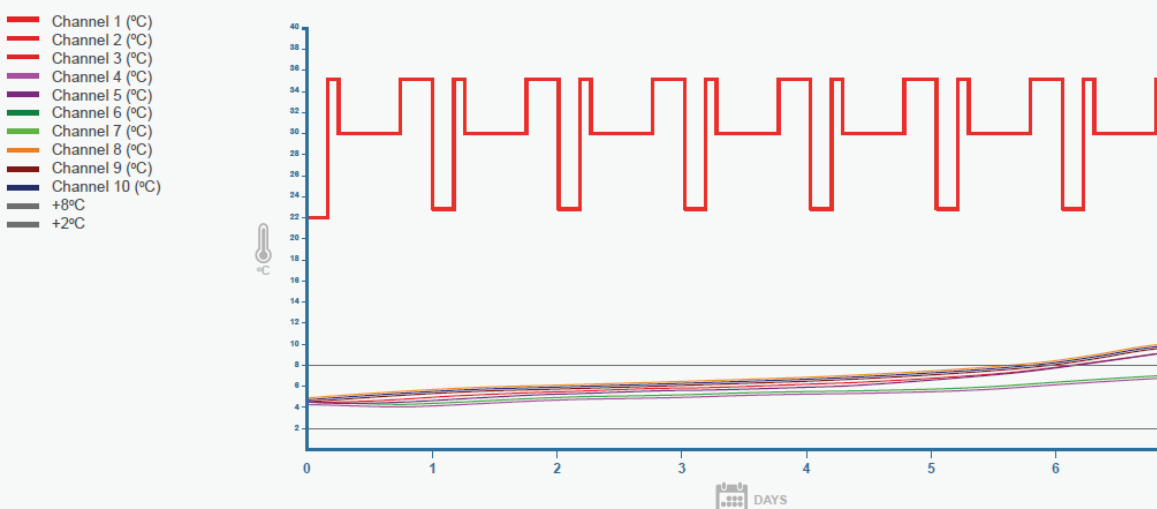
About CoolPall™ Flex

CoolPall™ Flex a range of high-performance bulk shippers, available in ISO and EURO footprints from Peli BioThermal.

CoolPall™ Flex is highly customisable, allowing users to tailor their shipper to specific shipping lanes or performance requirements, to achieve the optimal thermal protection at lowest overall cost. Models incorporate either polystyrene or VIP's, water or PCM coolants in single or double configurations, in 3 different sizes:- NBA - narrow bodied aircraft, HH - half height, FH - full height

CoolPall™ Flex is designed to ensure maximum protection and ease of pack out through the use of common components. CoolPall™ Flex is lightweight, extremely quick to build and offers superior temperature stability in excess of 140 hours.

Performance chart - Series 4 Flex Advance HH Double Pod ISO, ISTA 7D Hot



**FOR MORE INFORMATION ABOUT PELI BIOTHERMAL PRODUCTS, PLEASE CONTACT:
INFO@PELIBIOTHERMAL.COM T: +44 (0)1525 243 770 PELIBIOTHERMAL.COM**